



# Writer

connect. create. validate.

**R4i Writer is the most advanced XML Authoring Tool for Technical Writers required to create mission critical content. Write S1000D data modules faster with drag & drop references, automatic hotspots and live document previews.**

**R4i Writer is optimized for the S1000D data formats and installs “Ready to Write” with schema’s and stylesheets for S1000D version 2.0 to latest XML included. Fully integrated with the R4i CSDB, writers can now easily create high quality operational and maintenance information for PDF, HTML and IETP delivery.**

## **The fastest and easiest way to create S1000D compliant content**

**R4i Writer®** allows authors to work in a native XML authoring environment while accessing content and resources directly from the R4i CSDB Server®.

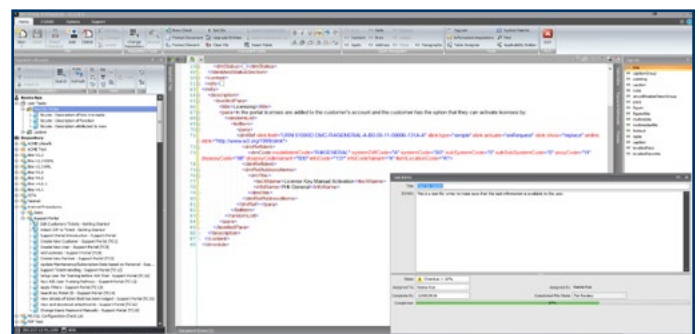
R4i Writer includes IETM preview and PDF publishing capabilities, eliminating the need for authors to use multiple S1000D tools.

## **Seamless CSDB Integration**

- **Reduce authoring time by 5 minutes for every:**
  - Image insertion,
  - reference to a Data Module, and
  - reference to External Publications.
- **No jumping between multiple S1000D products** – Stay inside the R4i Writer XML authoring environment to “drag n drop”, check-in, check-out and reset checked-out Data Modules in the R4i CSDB Common Source Database.
- **Side by side review** - Undock the DM window to allow side by side review, including ability to drag content from one DM to another.
- **Zero errors** – The auto-insertion of all the correct ICN, DMC and REFTP element and attribute information ensures authors do not create invalid references.
- **Prevent incorrect applicability filtering blocks being added** – Direct access to the R4i CSDB Server’s Applicability Window, allows ACT Module content to be directly dropped into the Authoring Window, ensuring applicability mark-up is inserted correctly and easily.

- **Task Notification/User Folder** – Users have the ability to view the tasks that have been assigned to the user, including the files that are associated with the task. The user can see when the task needs to be completed and what state the task needs to be set when files are checked back into the Repository. The Tasks window also provides the user notifications of percentage of completion.

With direct access into the R4i CSDB Server, users can search, browse and preview images, data modules and external publication content, before fast insertion of the reference via the “drag n drop” interface.





## Save Authoring time and deliver custom content

Authors won't have any problem preparing content specifically for each equipment make and model for end-customers, with assignment of ID's (applicRefid) to blocks of content made easy via simple attribute selection.

## Dynamic update of common parts, spares, consumables and warnings/caution content

With direct access and insertion of content from CIR (Common Information Repository) / TIR (Technical Information Repository) modules, references are automatically monitored and the latest single source of content is automatically displayed to end-users of the content.

## Reduce errors

With the document tree window displaying a document structure outline, guided editing via the tag insert catalog and smart insertion buttons for commonly inserted element structures, authors won't want to leave this interface!

## Conform to Business Rules

With built in BREX Validation, included layered BREX support, authors can check they are writing to the project / contracted business requirements.

## Save Development time

Has the ability to easily switch stylesheets while previewing the current document.

## Document Compare

While authoring a document in R4i Writer, compare your in-work version to an older version in the CSDB.

## Perfect Hotspots every time

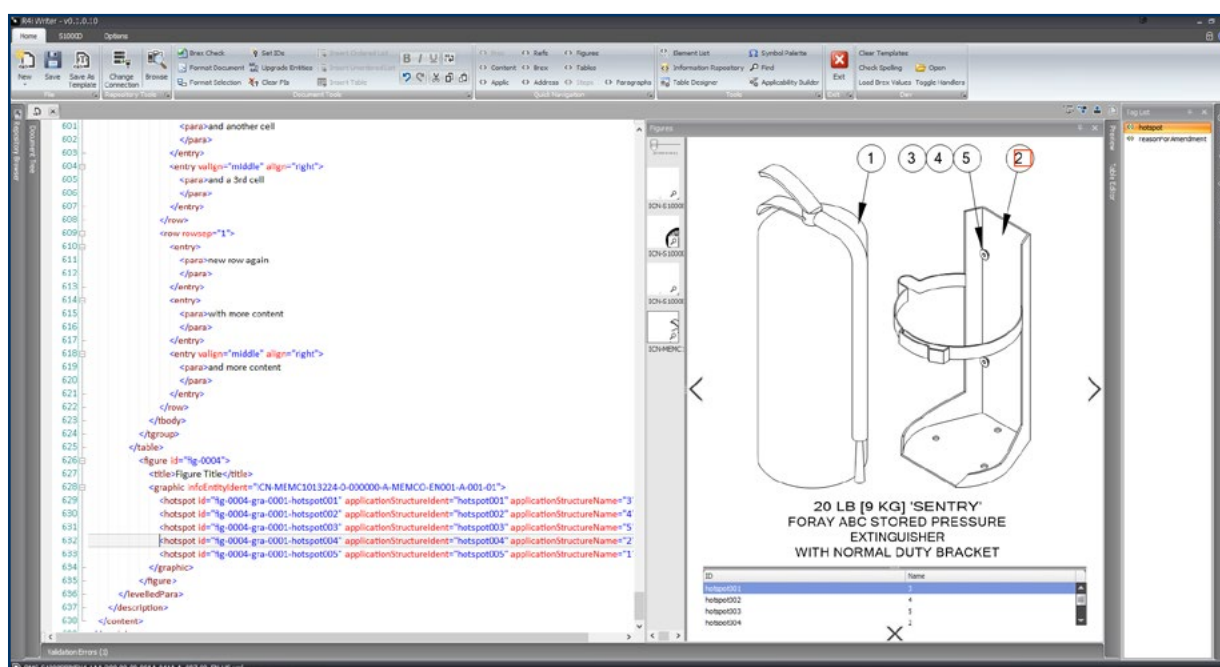
With the hotspot selection interface, images with hotspot details are displayed for easy selection and insertion in the authoring window, and saving hours of manually inserting references.

## Save publishing time

The R4i Writer IETP Preview window allows the author to see how the Data Module will look when it is published to an Interactive Electronic Technical Publication (IETP).

## System Requirements

- Windows 8/8.1, Windows 10\*
- 16GB Ram
- .Net 4.7.2 and above
- Adobe Acrobat Reader for preview of generated PDF - Free Download



For more information and to learn more about the R4i Product Suite, visit us at [www.pennantplc.com](http://www.pennantplc.com) or email us at [sales@pennantplc.com](mailto:sales@pennantplc.com) to schedule a demonstration.