



# Media Generator

design. create. deliver.

**The R4i Media Generator allows you to easily generate powerful IETPs in three mouse clicks.**

**Build your IETPs within hours not weeks, with no programming, no scripts and no IT assistance. Anyone can use the Media Generator Tool.**

R4i Media Generator creates technical and operational information that complies with industry specifications including ASD S1000D, ATA Spec 2100, Spec 1000BR, iSpec 2200, iSpec 2300, MilSpec, Shipdex, Raildex, DITA and others.

R4i Media Generator can create IETP's for the following output types:

- R4i Viewer
- HTML 5
  - o Windows
  - o R4i MobieTP for Android
  - o R4i MobieTP for iOS
- Data Delivery (DDN)
- R4i Viewer IETP Change Package

The R4i IETP Viewers are licensed as royalty FREE to distribute for R4i Media Generator Customers. IETP's can be generated for offline use or online connected to the R4i Content Distribution Management Server (R4i CDMS).

IETP's generated for HTML have the option to automatically convert CGM images to SVG format.

Integrate just in time learning.

## Seamless CSDB Integration

**No jumping between multiple S1000D products –** Stay inside the R4i CSDB Client to “drag n drop” IETP delivery files from within the R4i CSDB Common Source Database.

Automatically push to the R4i CDMS software for controlled distribution of your IETP's.

Integrate just in time learning packages into your IETP's.

**Save time –** The Templates feature provides the ability to store all of the IETPs structure and configuration settings within the CSDB, allowing for re-use later.

**Reduce errors –** Generated IETP's are checked during creation to ensure error free content for delivery. A report of missing and unpublished data modules and images is displayed when generating IETP's.

IETP's created with the Media Generator tool can provide operators and maintainers with real time parts from 3rd party systems when the free R4i IETP Viewer is connected to a R4i CDMS System.

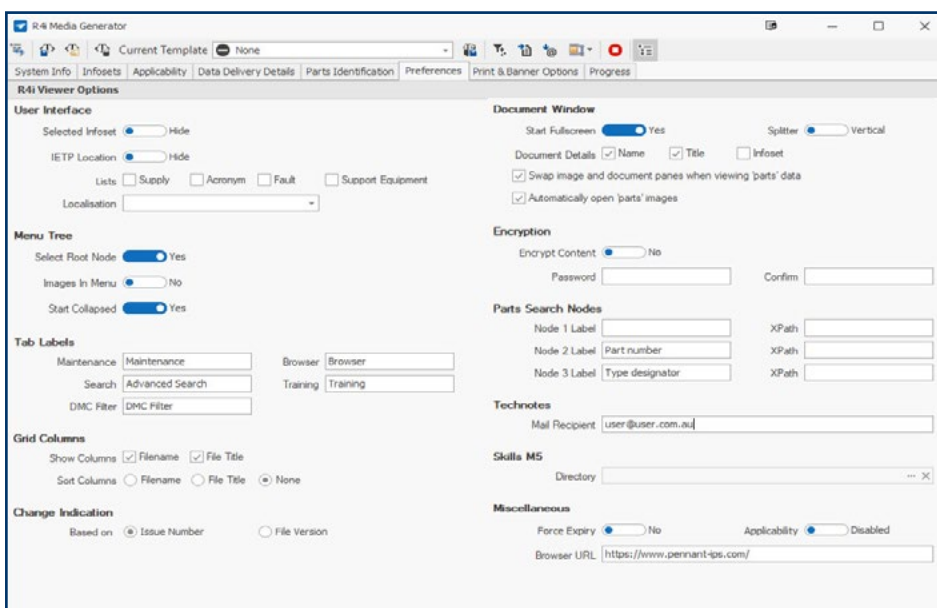
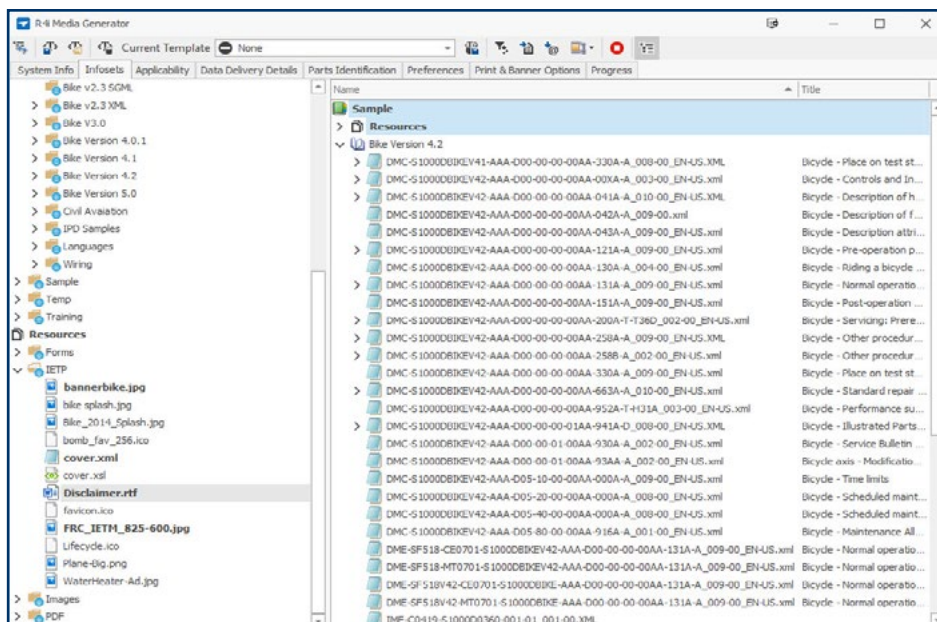
Features displayed in the R4i IETP viewers are optional and configurable via the Media Generator window, so that content generated for each customer can be unique. There are 125 configurable feature items that can be saved in Media Generator templates.

The Data Delivery option is used to issue an ASD S1000D compliant data delivery to an end customer instead of an IETP. The Data Delivery package options include:

- BREX Referencing
- Data Dispatch Note (DDN)
- Publication Module (optional auto generation)

## R4i IETP Change Packages

Generate Change Packages for R4i Viewer based on Data Module Issue Number or based on internal CSDB Change Management controls of monitoring all files that have been added, deleted or modified in the CSDB since last IETP generation.



## System Requirements

- Windows 8/8.1, Windows 10 (64bit Editions)

Note: Above Windows are not installed and not licenses with R4i

- Recommended minimum hardware specifications are 4GB Ram

- Microsoft Internet Explorer V11 or higher installed on the pc

Note: Microsoft Edge is not supported

- Microsoft .NET Framework V4.5.2 and above

Note: Microsoft.Net is freely available from <http://www.microsoft.com/en-us/default.aspx>

For more information and to learn more about the R4i Product Suite, visit us at [www.pennantplc.com](http://www.pennantplc.com) or email us at [sales@pennantplc.com](mailto:sales@pennantplc.com) to schedule a demonstration.