



LTS (LSA to S1000D)

engage. collaborate. enable.

R4i LTS (LSA TO S1000D) supports operation and maintenance of complex assets by extending logistics product data into dynamic S1000D electronic publications.

R4i LTS is a powerful productivity tool that takes engineering content contained within a Logistics Support Analysis (LSA) database and re-use it to dynamically generate compliant technical data to the ASD S1000D specification.

R4i LTS brings flexibility and simplicity to the production and maintenance of S1000D technical publication content, enabling technical authors to dynamically build and update S1000D data from an OmegaPS logistics product database.

R4i LTS is an optional licensed module that integrates with the R4i Common Source Database (CSDB) Server (see separate brochure).

Publish IETM/IETP content to mobile devices with R4i MobieTP and R4i Viewer via the R4i Content Distribution Management Server (CDMS).

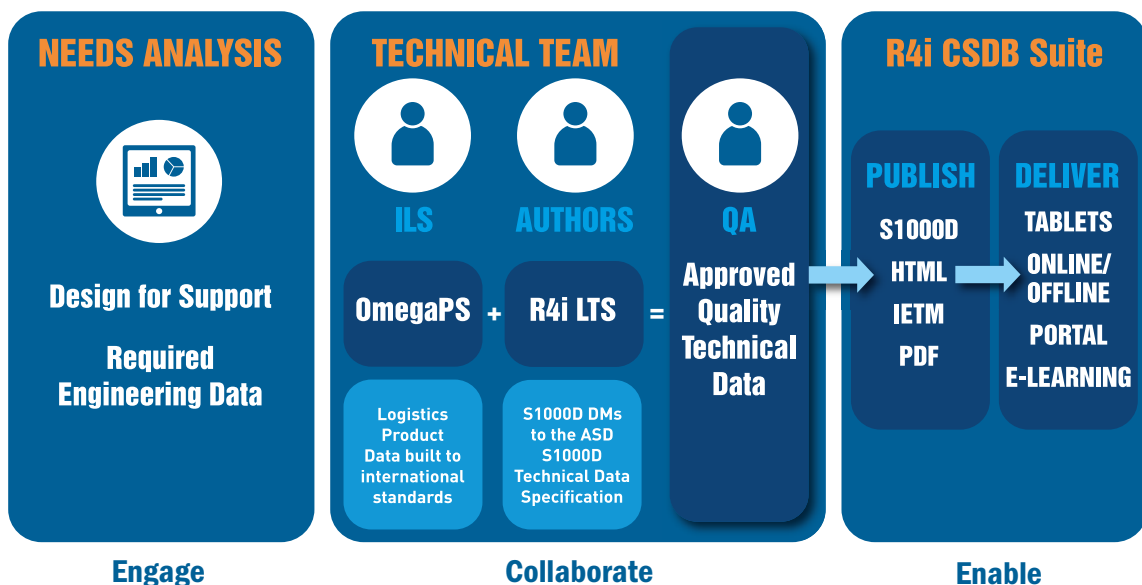
How it works

R4i LTS accesses LSA Databases or reads XML data exchange files that have been built to compliant product support data structures such as SAE GEIA-0007, MIL-STD-1388-2B, DEF STAN 00-60 DEF AUST 5692, and ASD S3000L.

The content generated from the LSAR via R4i LTS can then be published and delivered as ASD S1000D compliant content. Utilizing R4i Binder from the S1000D R4i Publishing Suite, the S1000D data can be delivered as CAWG CMP, DEF AUST 5629, MIL-STD-3031 and DND CFTO PDF's.

Benefits of R4i LTS

- **Agile Pubs** – Agile technical publications created at the speed of change from your product support data, reduces the build cycle and improves quality to meet your customers' requirements.
- **Speed** – Generate technical documentation earlier in design and development, and reduce your revision cycles.
- **Save Time** – Reduce project start-up time by automatically generating 30% of your base technical documentation, directly from OmegaPS or GEIASTD 007 Data Exchange Files.





- **Quality** – By producing technical content from from OmegaPS or GEIASTD 007 Data Exchange Files, the LSAR content becomes the single point of truth.
- **Deliver** – The R4i S1000D Suite provides all stakeholders with access to authorized content via mobile devices, online, offline and from a distribution portal.

S1000D Support

R4i LTS allows connection to the LSAR project data and data exchange files in your OmegaPS database to generate compliant S1000D data modules with just one click. R4i LTS supports the automatic generation of S1000D content to Issue 4.0 and above (including patch versions).

The following content is created:

- Data Module Coding (DMC's)
- Common Information Repository (CIR) modules for Consumables, Spares, Tools and Warnings and Cautions
- Procedural Data Modules
- Illustrated Parts Data Modules
- Images with their assigned Illustrated Control Numbers (ICN)
- Automatic linking from Procedural Content steps to internally referenced Tools List

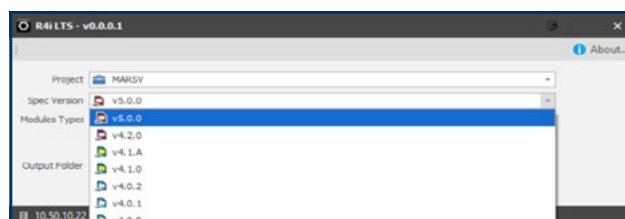
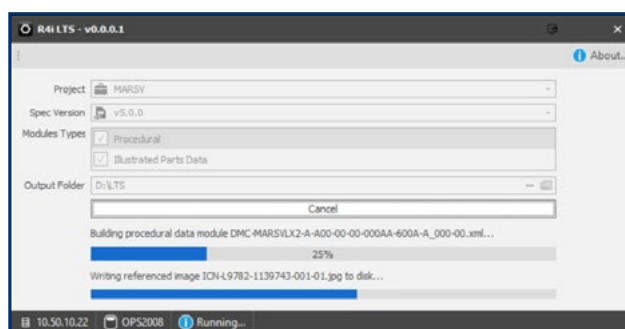
Engage and Collaborate

By deploying R4i LTS your data will be aligned with authorized engineering content, improving the quality whilst reducing data revision and providing long term cost savings during a project's life-cycle.

Enable

Re-using approved data enables responsive publishing to HTML, IETM and PDF with a dynamic delivery system to tablets with online/offline, portal and e-learning platforms.

When R4i LTS is deployed with the commercial off-the-shelf R4i Product Suite, technical content can be maintained (R4i Writer), managed (R4i CSDB), published to PDF (R4i Binder) and free IETM viewers (R4i Viewer), with controlled distribution (R4i CDMS) to mobile devices (R4i MobieTP).



```

16 |>
17 |<module xmlns:xsi="http://www.w3.org/2001/XMLSchema-instance" xsi:noNamespaceSchemaLocation="http://www.s1000d.org/S1000D_5-0/xml_schema_flat/
18 |proc_d.xsd" xmlns:rdf="http://www.w3.org/1999/02/22-rdf-syntax-ns#" xmlns:dc="http://www.purl.org/dc/elements/1.1/" xmlns:xlink="http://www.w3.org/1999/xlink">
19 |  <rdf:Description></rdf:Description>
31 |  <identAndStatusSection>
32 |    <dmAddress>
33 |      <dmIdent>
34 |        <dmCode modelIdentCode="MARSVLX2" systemDiffCode="A" systemCode="A00" subSystemCode="0" subSubSystemCode="0" assyCode="00"
35 |disassyCode="00" disassyCodeVariant="0AA" infoCode="600" infoCodeVariant="A" itemLocationCode="A"/>
36 |        <language languageIsoCode="en" countryIsoCode="AU"/>
37 |        <issueInfo issueNumber="000" inWork="00"/>
38 |      </dmIdent>
39 |      <dmAddressItems>
40 |        <issueDate year="2019" month="09" day="26"/>
41 |      </dmAddressItems>
42 |      <dmTitle>
43 |        <techName>ENGINE ASSEMBLY</techName>
44 |        <infoName>R/R GAS GENERATOR MODULE ASSY</infoName>
45 |      </dmTitle>
46 |    </dmAddress>
47 |    <dmStatus></dmStatus>
71 |  </identAndStatusSection>
72 |  <content>
73 |    <procedure>
74 |      <preliminaryRqmts>
75 |        <reqCondGroup>
76 |          <noConds/>
77 |        </reqCondGroup>
78 |        <reqPersons>
79 |          <person man="A">
80 |            <personCategory personCategoryCode="TURBINE MECHANIC"/>

```

For more information and to learn more about the R4i Product Suite, visit us at www.pennantplc.com or email us at sales@pennantplc.com to schedule a demonstration.