



# IPD Manager

import. create. deliver.



## Easily create high quality parts catalogs with hotspot and warehouse data link support.

The **design and production** of an asset starts with engineering information in the form of drawings, Bill of Materials (BoM) and supporting technical information. As soon as the design is approved, technical writers, illustrators and engineers need to collaborate to produce intelligent parts information that is supported by in depth operating and servicing information.

Traditionally, spread sheets hold parts information while illustrations are stored in repositories or on network drives. The collation, editing and publishing of the required data can be complex and time consuming.

**R4i Illustrated Parts Data Manager** automates the process of parts data creation, speeding time to market and eliminating human error from the parts data production cycle. Designed to connect to disparate information systems, Microsoft Excel spread sheets and SQL Databases, the R4i IPD Manager allows authors to simply map the data fields to their required export data sets.

Non-proprietary XSL stylesheets then generate IPD manuals or S1000D Data Modules with linked illustrations. This interactive content can then be produced as PDF, HTML or checked into the R4i CSDB Server® for inclusion in the R4i Viewer® package.

## Powerful Features

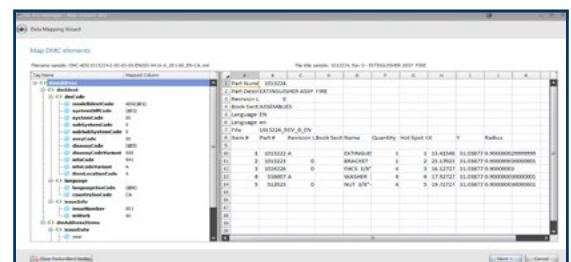
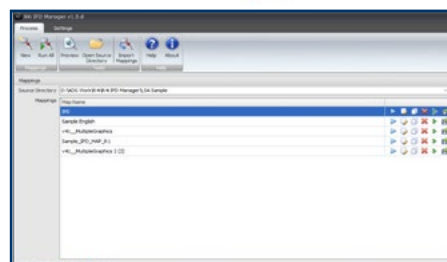
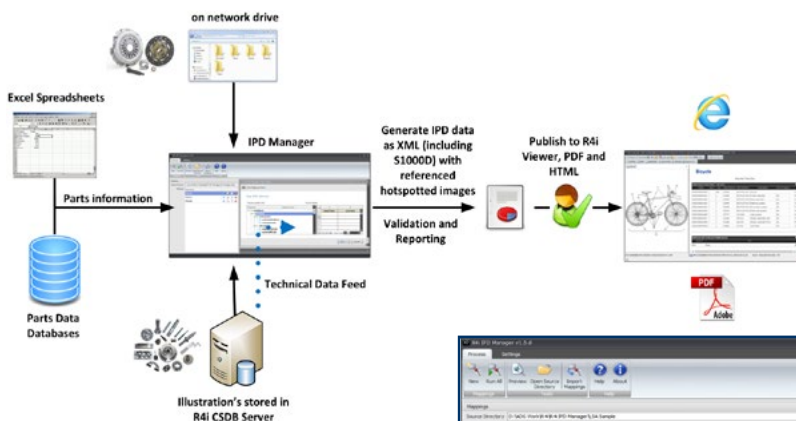
Designed for Microsoft Windows operating systems, R4i IPD Manager can be used as a stand-alone tool or linked to the R4i CSDB Server® to access illustrations and content.

Easy to use R4i IPD Manager powerful features include:

- Supports importing of SQL database and Excel spread sheet content.
- Fast creation of S1000D Data Modules version 2.0 onwards.
- Automatic generation of hotspot hyperlinks.
- Easy generation of the Identification and Status block.
- Automatic Cross References.
- Automatic linking of illustrations.
- Built in Data Mapping wizard.
- Support for automatic completion of data fields.

## One time setup

1. Select the version of S1000D.
2. Select the Excel spread sheet or SQL data source.
3. Select the designed data range.
4. Map columns, elements and attributes.
5. Save the configuration.
6. Generate the Illustrated Parts Data XML files.
7. Preview with R4i Viewer Preview.



For more information and to learn more about the R4i Product Suite, visit us at [www.pennantplc.com](http://www.pennantplc.com) or email us at [sales@pennantplc.com](mailto:sales@pennantplc.com) to schedule a demonstration.