



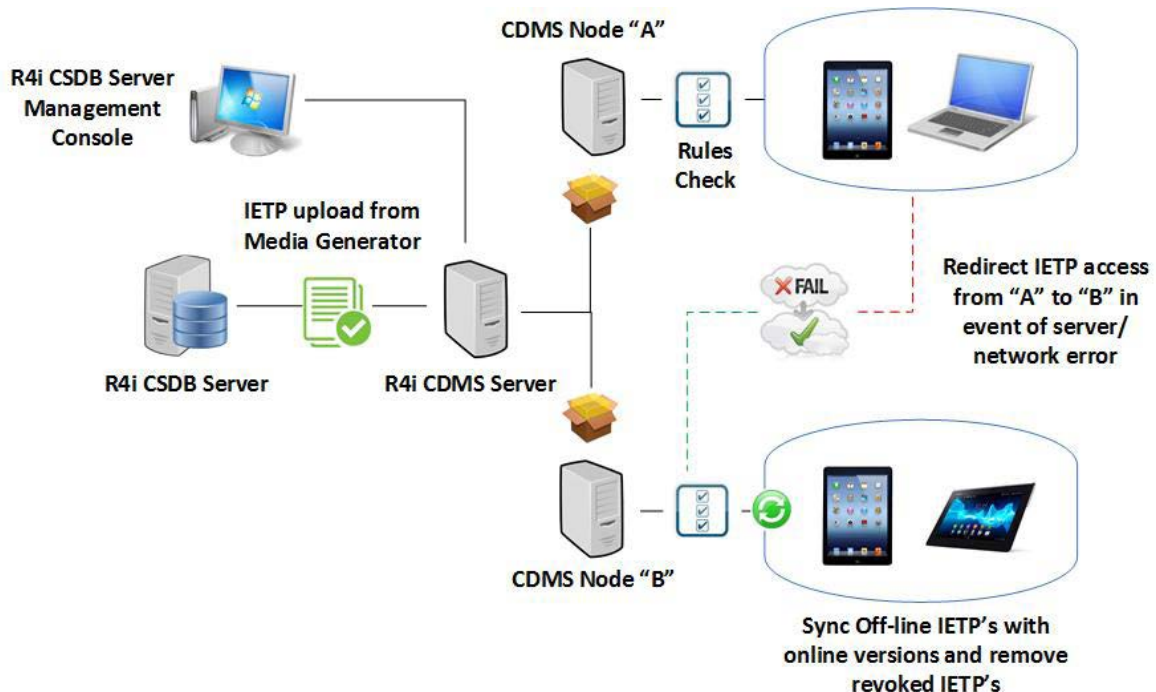
The R4i Content Distribution and Management Server (CDMS) is an IETM Distribution Ecosystem that provides information publishers with control of the distribution lifecycle of their online and offline content.

The R4i CDMS is designed specifically to make the deployment and maintenance of IETM content easy for Publication Managers without needing assistance from the IT department. The R4i CDMS system is made up of the CDMS application and CDMS nodes. The use of multiple CDMS nodes is recommended when large deployments of IETM's with R4i Viewer and R4i MobieTP are expected.

Authorized content is generated in the R4i CSDB and uploaded to the R4i CDMS for distribution based on rules selected by the publishing team. The rules include content access, online or offline access and content expiration. Superseded IETM's can be automatically removed from Windows and Android devices.

Using the browser based CDMS Administration console, IETM Websites, offline IETM packages and software updates are deployed to selected CDMS Nodes. Deployment options are then selected based on the organizations requirements, offering the following benefits:

- **Reduce IT staff load** - The IT department can redirect access to online and offline IETM's to different servers without Viewer users needing to change web addresses or network share names.
- **Stage IETM's** – Stage one or more IETM's on CDMS Nodes and only make them visible to R4i Viewer and R4i iOS and Android MobieTP Viewers when ready.
- **Easy IETM Access** – Viewer users can select how they want to access IETM's. Users can access IETM's locally, on a network drive or a web server. Users never need to know web addresses, network shares or where the IETM is stored locally.
- **SVG Support with Hotspots** – Distribute touch screen friendly, high resolution illustrations from CGM source formats.
- **IETM Updates** – IETM's can change. To avoid users needing to download updated full IETMs, small change packages can be deployed to update the existing local IETM.





- **Maximum Availability** – To ensure technical information is always available, the R4i Viewer seamlessly reconnects to one or more CDMS nodes in the event of a server or network failure.
- **Total Control** - Distribute full IETM's and change packages to one or more Internet distribution points without any IT department assistance. Define how IETM's are accessed, removed and updated on PC's and Tablets.

The user only sees a “connect” option in the R4i Viewer and R4i MobileTP applications, but where they connect, what they see, and what they can do with the IETM content is controlled via the R4i CDMS Management console. If enabled, the user can choose to browse online or download and load IETM's onto their Windows or Android Device.

Leverage your technical and operational content with the S1000D R4i IETM Viewers for Windows, R4i MobieTP for Android and R4i MobieTP for iOS devices.

R4i MobieTP for Android and iOS Devices

The R4i MobieTP app is a royalty-free application for Android and iOS users. Mobile IETPs free technicians, operators and crews from desktop PC's and bulky laptops at minimum cost to an organization.

The R4i MobieTP Viewer for Android and iOS utilizes single source IETP packages generated from the R4i CSDB Server, including support for applicability. IETP packages are generated from the R4i CSDB Media Generator which are in turn 'read' by the R4i MobieTP on Android or iOS devices.

Optimized for small screens and large files, the native Mobile IETP Viewer is simple to use and can access content in both online and offline modes on Android and iOS devices.

The R4i CDMS resides between the R4i CSDB and the IETM end user and manages IETM package downloads and access.

The MobieTP application supports SVG graphics which are converted from CGM when the IETM is created. Referenced PDFs and multimedia files are also supported.

R4i Viewer for Windows

A royalty-free IETM viewing application for Windows PC and tablet users. The R4i Viewer is an intelligent content access tool that provides operators and maintainers with an interactive and unified view of manuals, e-learning courseware and maintenance job tasking.

IETM packages are generated from the R4i CSDB Media Generator which are in turn 'read' by the R4i Viewer.

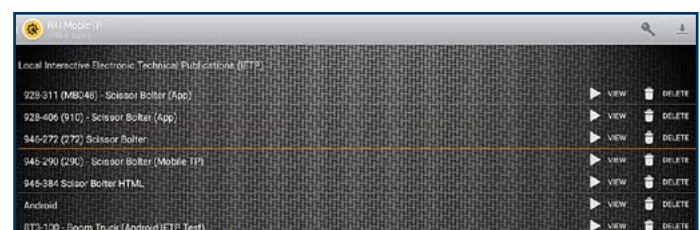
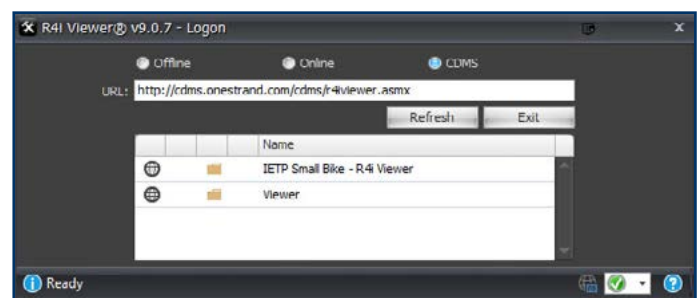
The R4i Viewer supports the dynamic presentation of any SGML, XML and PDF formats, as well as images, audio, video and written content.

The R4i Viewer operates in online real-time mode connected to the R4i CSDB and standalone offline mode.

The R4i Viewer for Windows can be started in two user selectable modes:

- PC Mode - which is optimized for large PC screens and laptops with a keyboard and mouse; or
- Tablet Mode – which is optimized for Windows 8.x/10 tablets and is designed for human “touch” operation.

The Viewer user can easily be switched between either mode at any time.



For more information and to learn more about the R4i Product Suite, visit us at www.pennantplc.com or email us at sales@pennantplc.com to schedule a demonstration.