

R4i Task Manager

→ task. track. measure.

Enhance project control and task progression with R4i Task Manager Server, the integrated productivity tool which ensures teams can access and assign work tasks to local and global assets.

R4i Task Manager Server

The browser based R4i Task Manager Console provides a clear view of task status and history. The R4i Task Manager brings flexibility, speed, tracking and reporting to multiple project tasks, ensuring one global view of all tasks.

R4i CSDB Integration

The R4i Task Manager includes direct integration into the R4i CSDB Server database, enabling data modules and illustrations to be linked to tasks for assignment.

Multiple Project Support

Setup one major project or many smaller ones with internal and external users assigned to one or more project. Only users assigned to the same project can assign, view and action tasks within that project.

The Task View Plug-in

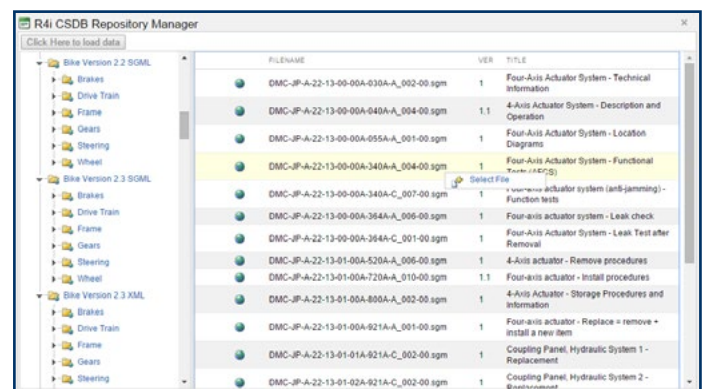
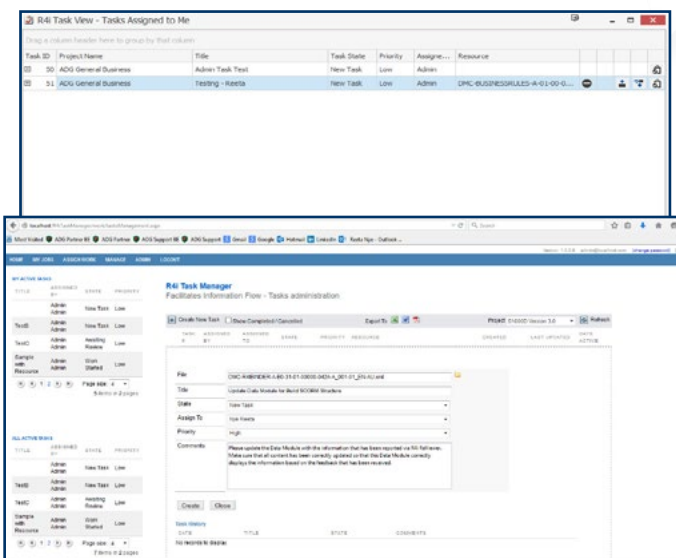
Users are seamlessly connected to the R4i Task Manager portal via the R4i Task View PC Plug-in for Windows 8 and 10. The Task View monitors the R4i Task Manager Server for new tasks and any status change to existing tasks.

Benefits of R4i Task Manager

- **Fast Setup** – Easy to configure custom Tasks and Workflow.
- **Multi-Project Management** – Manage multiple projects and multiple tasks within those projects.
- **User and Group Profiles** – Users can be assigned to job roles and group profiles as part of the project configuration.
- **Flexibility when assigning files** – Browse directly into the R4i CSDB to assign tasks to objects or point to external objects in other SQL databases.
- **Instant task notifications** – Job alerts pop-up in users' desktop systems tray via the R4i Task View PC Plug-in.
- **Save time** – One click check-out of the assigned task document from the R4i Task View tray.
- **Project Reports** – Monitor, track and report on each task and its stage in the job cycle.

R4i Task Manager has a robust ability to:

- Enable the Assign Task modules to be filtered by priority and assignment.
- Export the data to Microsoft Excel, Word and/or Adobe PDF.
- Support direct integration into the R4i CSDB.
- Link Data Modules and Illustrations to the created tasks.



For more information and to learn more about the R4i Product Suite, visit us at www.Pennant-IPS.com or email us at sales@pennantplc.com to schedule a demonstration.

